

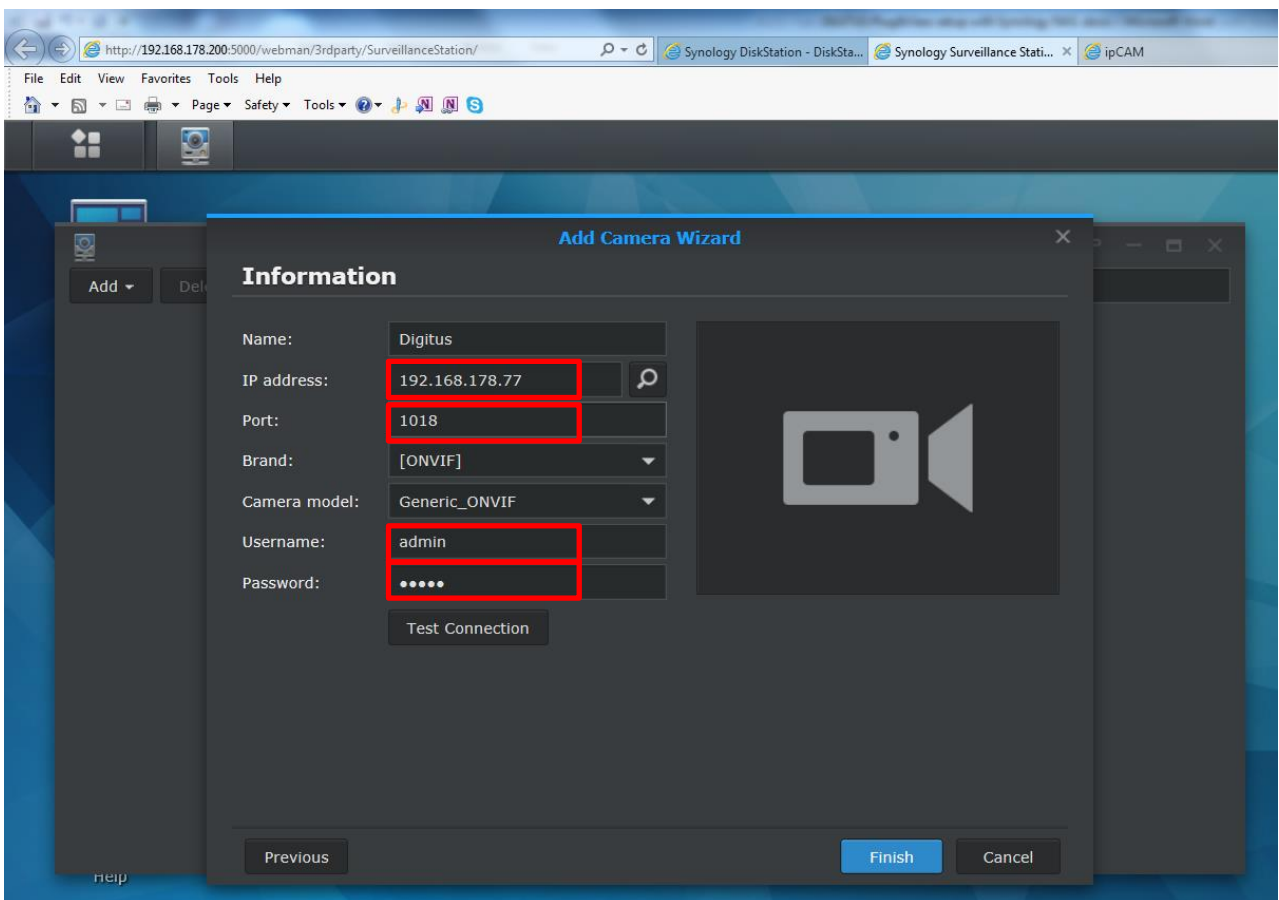
DIGITUS Plug&View Setup with Synology NAS

FW version: From 2015/July/13 FW version and onwards.

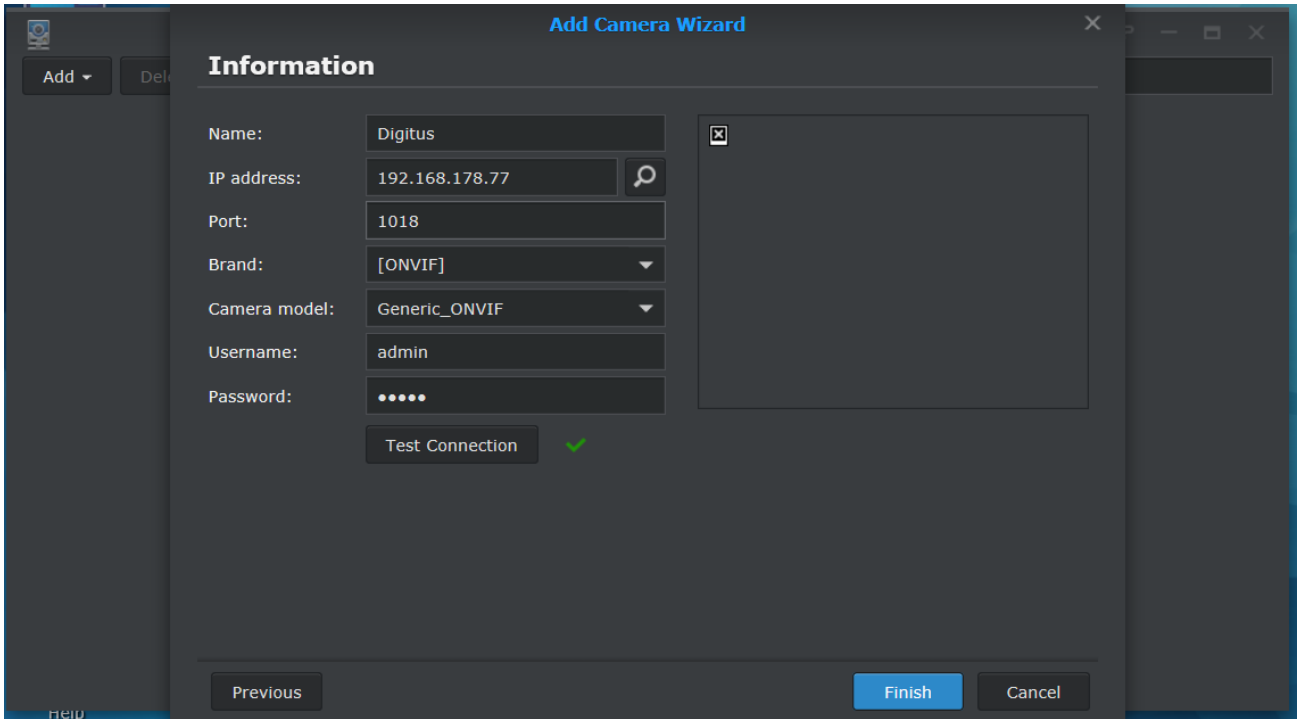
Applied models:

DN-16029, DN-16036R2, DN-16038R2, DN-16039R2, DN-16040R2, DN-16043R2, DN-16044R2, DN-16046, DN-16047, DN-16048, DN-16049.

1. Please key in the IP address of the camera or use the search function to find it.
Please make sure the port number of 1018 is used.
The default username and password is admin/admin.



2. Please press “Test Connection” and then you will see “Test connection success”.



3. Then press “Finish” to complete the installation.

